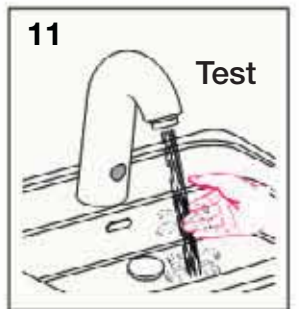
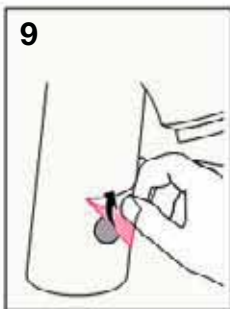
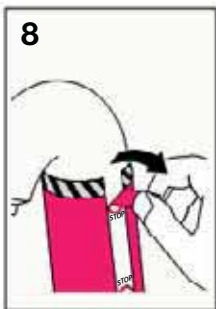
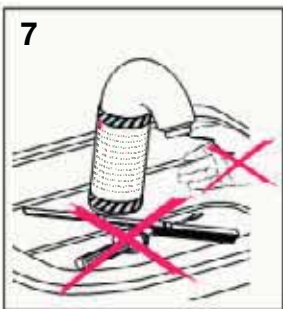
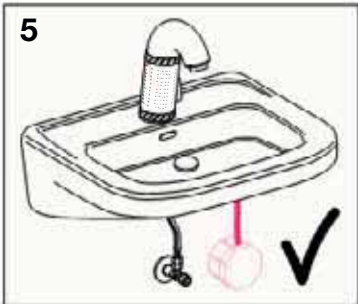
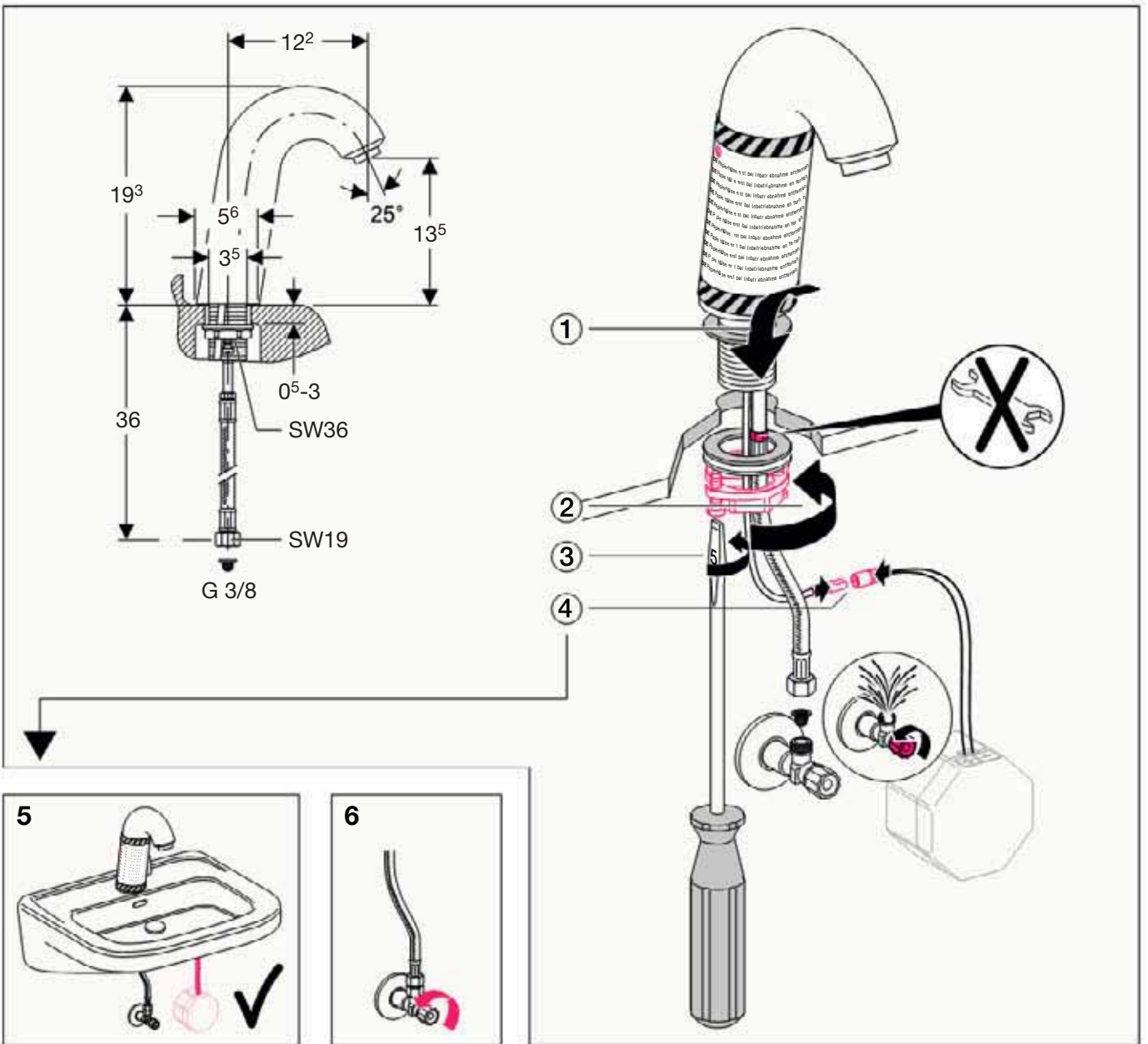


Geberit Montage 115.740



D6120-002&BDC © 03-2005

964.369.00.0 (02)

■ GEBERIT

Geberit Service

DE Wassermenge ist zu gering → **1** Filter und **2** Strahlregler reinigen

FR Le débit est insuffisant → **1** nettoyer les filtres et **2** l'aérateur

IT La quantità d'acqua non è sufficiente → **1** pulire i filtri e **2** il rompiegetto

GB Water flow is insufficient → **1** clean filters and **2** aerator

NL Waterhoeveelheid te gering → **1** Filter en **2** perlator schoon maken

ES Insuficiente flujo de agua → **1** limpiar los filtros y **2** aireadores

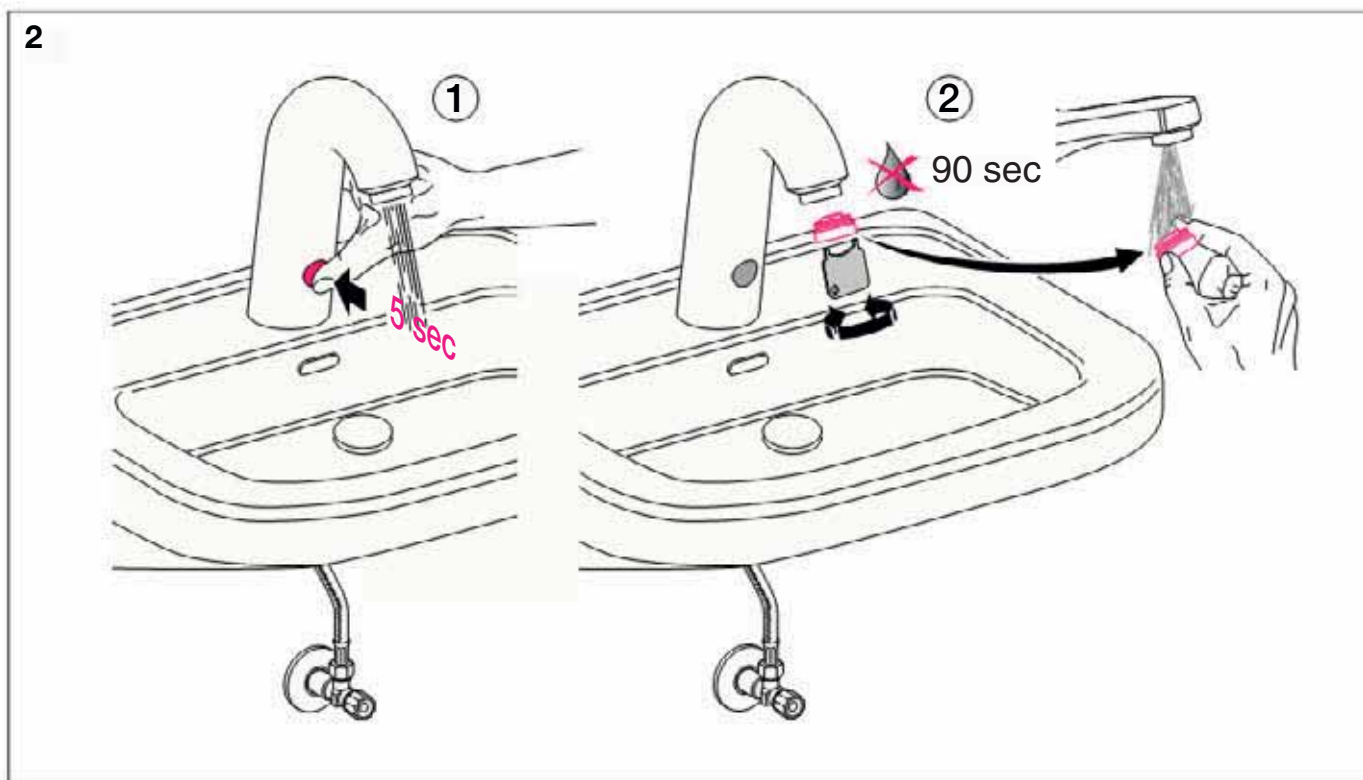
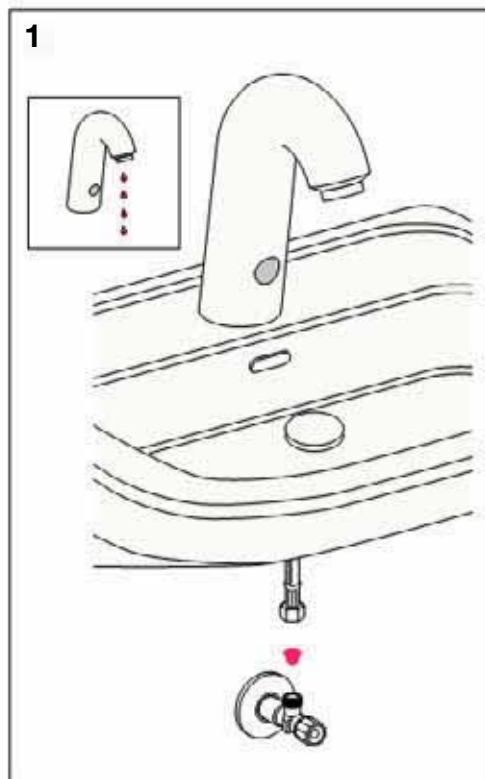
PT O caudal de descarga não é suficiente → **1** limpar o filtro e **2** o perlator

PL Strumień wody niewystarczający → **1** Wyczyścić filtry **2** perlator

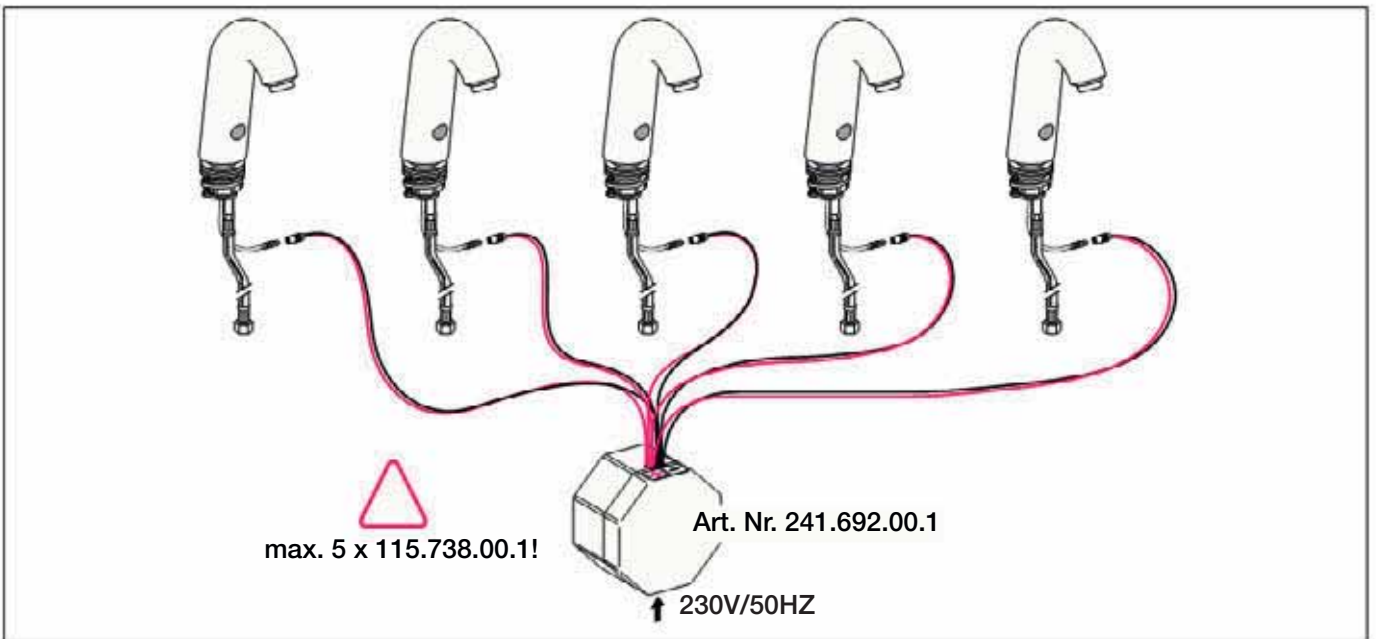
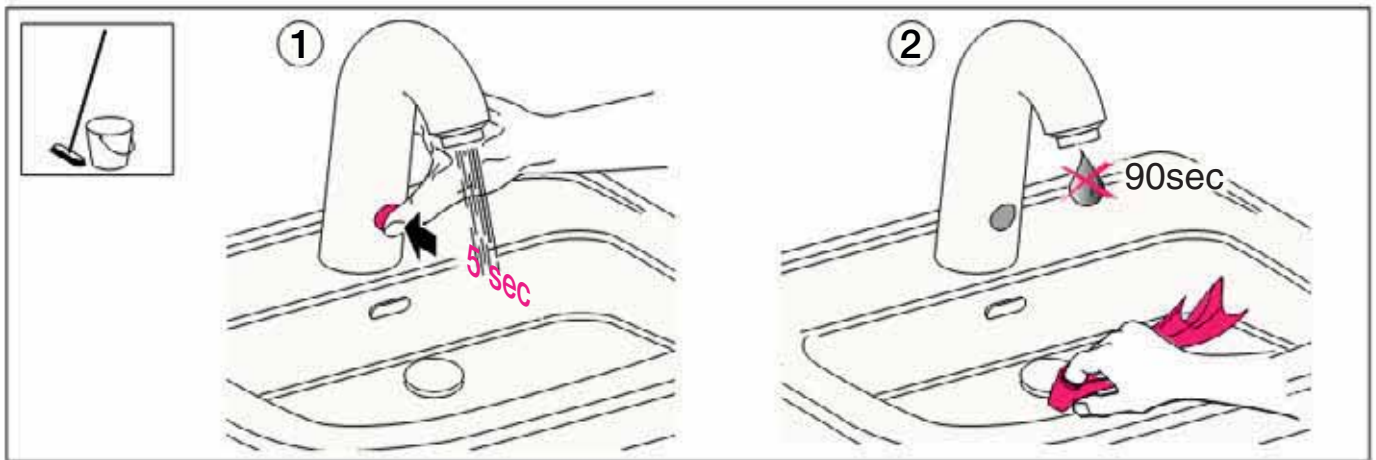
SI Količina vode je premala → **1** Očistiti filter in **2** perlator

HR Količina vode je premala → **1** Očistiti filteri **2** perlator

SK Prúd vody je slabý → **1** vyisti filter a **2** perlátor



Geberit Service



Service-Handy

Art. Nr. 115.830.00.1



DE	Bedienungsanleitungen können sie kostenlos bei ihrer Geberit Vertriebsgesellschaft bestellen!
FR	Vous pouvez commander des notices d'utilisation du Service Handy auprès de votre société Geberit!
IT	Le istruzioni d'uso possono essere richieste presso la vostra sede commerciale Geberit!
EN	Please order the user's manual for the service handy at your Geberit company!
NL	Bedienings handleidingen kunt u gratis bestellen bij uw Geberit organisatie!
ES	Pedir el manual de usuario para el mando a distancia en la central de Geberit!
PT	Instruções de montagem podem ser edidas à Geberit!
PL	Instrukcję obsługi można bezpłatnie zamówić w firmie Geberit SP.z.o.o.!
SI	Navodilo lahko naročite v prodajnem oddelku firme Geberit!
HR	Uputstvo možete naručiti u prodajnom odjelu firme Geberit!
SK	Návod na použitie si môžete bezplatne vyžiada v spoločnosti Geberit Slovensko s.r.o.!

■ GEBERIT



= Reset

